

LEM

The workstation designed for any industry
to **mark any component** from **surface**
marking to **very deep** engraving applications

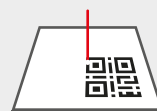


Discover the potential of the LEM.

www.lasea.com / info@lasea.com



ENGRAVING



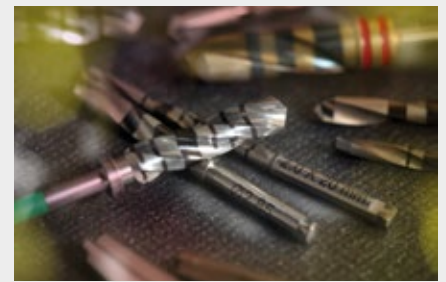
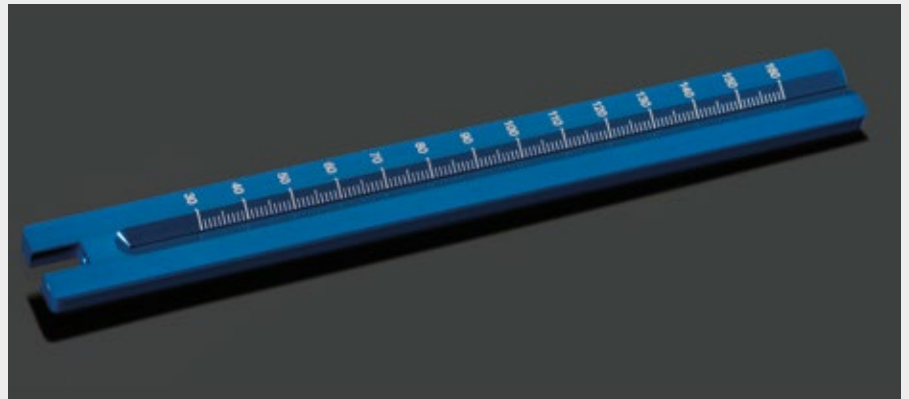
MARKING

LEM

HIGHLIGHTS

Powerful and flexible, the compact LEM station and its options are designed to adapt to a wide range of marking needs on any material.

- ▷ Fully sealed, reduced maintenance
- ▷ Easy access to the processing area
- ▷ Fast movement from one marking area to another
- ▷ No mechanical contact, no moving part, no tool wear

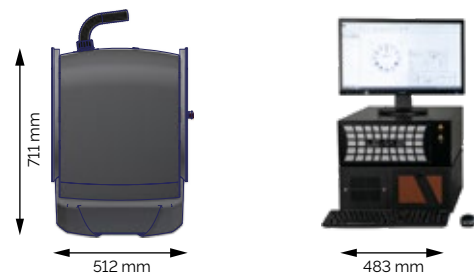
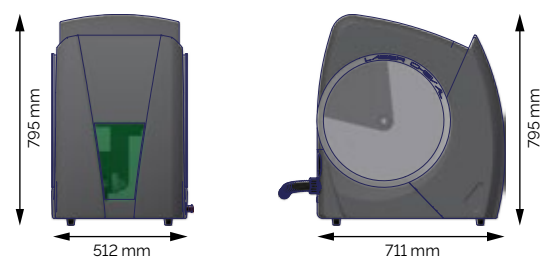


Standard equipment:

- ▷ Nanosecond fiber laser (20W to 50W) in Near-IR
- ▷ Galvo scan head for laser beam motion
- ▷ Mechanical Z axis of 350mm
- ▷ 160mm lens (other lenses possible as options)
- ▷ LENS control software (under Windows)
- ▷ Fume extraction system
- ▷ User training

Services / Options :

- ▷ LASERCAM proprietary software (positioning by video assistance or through the scanner)
- ▷ 3X VISION or other vision lateral vision systems
- ▷ Rotary axis
- ▷ Service contracts



± 100 kg

1.1 kW