

LASEA-neo

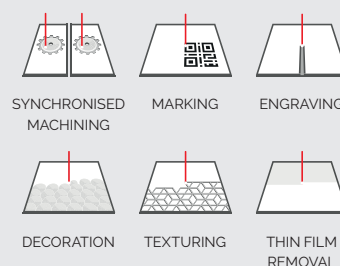
The solution that can micromachine several parts **simultaneously** thanks to its high-power laser combined with multiple scanner heads. It offers you **the highest productivity** with **the smallest footprint**.

LASEA-neo



Discover the potential of LASEA-neo at
<https://www.lasea.eu/en/lasea-neo/>

www.lasea.com / info@lasea.com



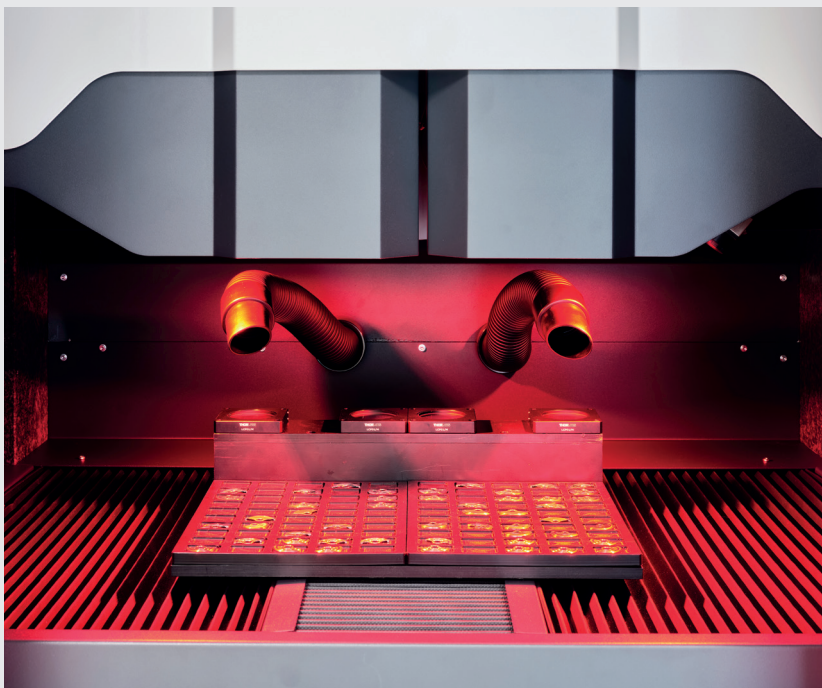
LASEA-neo

HIGHLIGHTS

The LASEA-neo machine stands out for its ability to integrate multiple scanner heads for simultaneous machining.

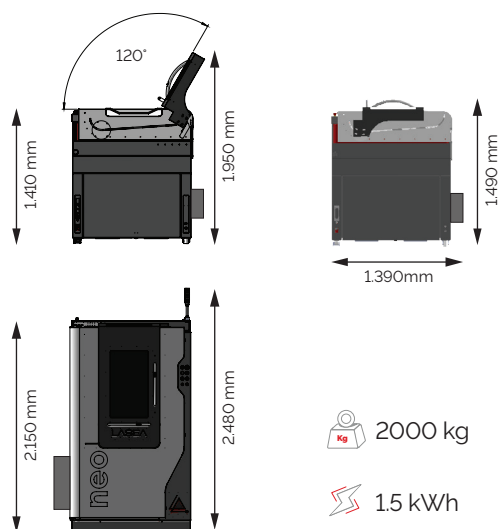
Combined with a footprint half that of conventional systems, LASEA-neo will revolutionise your productivity.

Its 4-camera vision system eliminates the need to precisely position each workpiece while guaranteeing perfectly positioned micro-machining.



Standard equipment:

- ▶ High-power laser for rapid machining (femtosecond 80W IR 400 μ J)
- ▶ High-precision mechanical axes 500 x 300 x 200mm
- ▶ Simultaneous machining of parts
- ▶ Industrial vision system with shape recognition
- ▶ Intuitive human-machine interface
- ▶ Micro-machining of individual parts up to 40 x 40mm
- ▶ Autonomous machining in trays
- ▶ Remotely accessible video of the work area
- ▶ Thermal-stabilisation system
- ▶ Smoke extraction system with fire protection
- ▶ User training
- ▶ 2-year guarantee



Services / Options :

- ▶ Additional specific training
- ▶ Autonomous Production options (robot, palletiser)
- ▶ Custom part holder

Discover the possibilities of our KYLA™, LS-HMI, LS-Cam and LS-Vision software.

