

For every industrial need

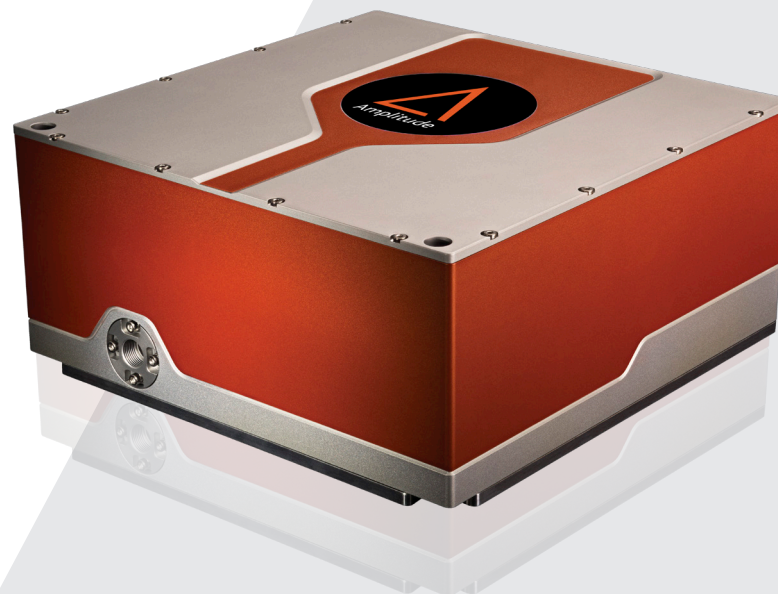
Goji

High precision, compact femtosecond laser

A medical marvel

Goji benefits from more than 15 years of experience in laser surgical applications. It has been specifically engineered and tested to meet the requirements of today's most demanding medical and industrial markets.

Goji ultra-compact platform features an industry-leading short pulse duration together with a high average power and an exceptional beam quality to allow the best-in-class processing quality. It is also ideally suited as a pump source for a tunable optical parametric oscillator and for applications in optogenetics and multi-photon imaging.



Applications

Medical:

- > Laser Surgery

Science:

- > Optogenetics
- > OPO-Pumping

Key Features

- > Ultra-compact and light
- > Industrial design
- > Air-cooled
- > Automated controls



Specifications

	Goji	Goji HP
Average Power	> 5 W	
Energy Per Pulse	> 125 nJ	> 500 nJ
Pulse Width	<150 fs	
Repetition Rate	40 MHz	10 to 40 MHz
Central Wavelength	1030 +/- 5 nm	
Beam Quality	$M^2 < 1.2$	
Beam Circularity	> 87%	
Long Term Mean Power Stability	< 1 % rms over 100 h	
Warm-up Time	< 30 min	

Dimensions

All Models	25 x 25 x 13 cm
------------	-----------------

Cooling

All Models	Air-cooled
------------	------------

Weight

Laser Head	10 kg
Power Supply 1	11 kg

