

PM (2+1)×1 Multi-Mode Pump Combiner (PMMPC)

Description

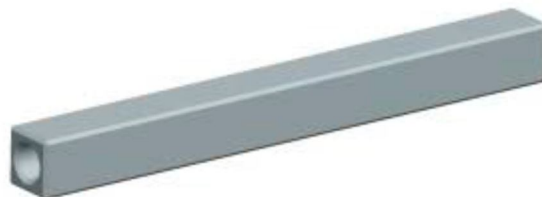
This PM (2+1)×1 multi-mode fiber combiner is designed for high power fiber laser application. It combines two pump lasers and one PM signal channel into one double cladding PM output fiber. Fiber type can be customized.

Key Features

- High Signal Transfer Efficiency
- High Pump Efficiency
- High PER
- Wavelength Insensitive
- Custom Configurations Available

Mechanical Dimension

C1: 50×5×5 in mm



Specifications

Parameters/Test conditions		Min	Typ.	Max	Unit	Note
1	Signal Operating Wavelength	1000	1064	1100	nm	
2	Pump Operating Wavelength	800		1000	nm	
3	Pump Fiber	Core Diameter	105		μm	Fiber code “110”
4		Cladding Diameter	125		μm	
5		Numerical Aperture	0.22		-	
6	Signal Fiber	PM 980-SM98-PR-U25A-H				Fiber code “635”
7	Output Fiber	PM 6/125 DCF 0.14/0.46NA				Fiber code “603”
8	Pump Efficiency	> 90	93		%	
9	Signal Insertion Loss		0.5	0.7	dB	
10	Power Handling		5	10	W	Each port
11	PER	18			dB	
12	M ²			1.3	-	
13	Optical Isolation	25	30		dB	
14	Fiber Length		0.8		m	Each port
15	Operating Environment Temperature	-5		+70	°C	
16	Operating Humidity	5		95	%RH	Not recommend in high humidity for long time.
17	Storage Temperature	-40		+85	°C	
18	Package	C1				50×5×5mm

Ordering Information

VPN: PMMPC-(2+1)x1-F-916/25-1064-110/635-603-C1-0.8m