

# (6+1)×1 Multi-Mode Pump Combiner (MPC)

## Description

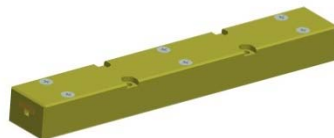
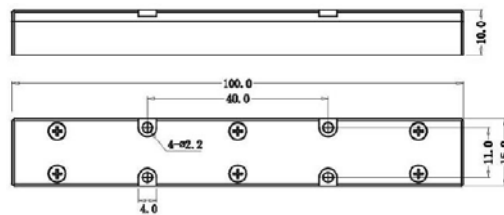
This (6+1)×1 multi-mode fiber combiner is designed for high power fiber laser application. It combines six pump lasers and one signal channel into one double cladding output fiber. Fiber type can be customized.

## Key Features

- High Signal Transfer Efficiency
- High Pump Efficiency
- Wavelength Insensitive
- Custom Configurations Available

## Mechanical Dimension

### C7: 100x15x10



**Unit: mm**

## Specifications

Parameters/Test conditions		Min	Typ.	Max	Unit	Note
1	Signal Operating Wavelength	1000	1064	1100	nm	
2	Pump Operating Wavelength	800		1000	nm	
3	Pump Fiber	Core Diameter		220	μm	Refer to fiber codes
4		Cladding Diameter		242	μm	
5		Numerical Aperture	0.22		-	
6	Signal Fiber	20/400 DCF				Refer to fiber codes
7	Output Fiber	20/400 DCF				Refer to fiber codes
8	Pump Efficiency	92	95		%	
9	Signal Insertion Loss		0.5	0.7	dB	
10	Power Handling	150			W	Each port
11	M <sup>2</sup>			1.3	-	
12	Optical Isolation	20			dB	
13	Fiber Length	0.8			m	Each port
14	Operating Environment Temperature	-5		+70	°C	
15	Operating Humidity	5		95	%RH	Not recommend in high humidity for long time.
16	Storage Temperature	-40		+85	°C	
17	Package	C7			-	

## Ordering Information

MPC-(6+1)×1-F(B)-Pump wavelength/Pump power-Signal wavelength-Pump fiber/Signal fiber-Output fiber-Package-Fiber length

### Note :

F: Forward pump; B: Backward pump.

Pump/Signal/Output fiber: refer to fiber codes.

Package: C7