

N×1 Multi-Mode Pump Combiner (MPC)

Description

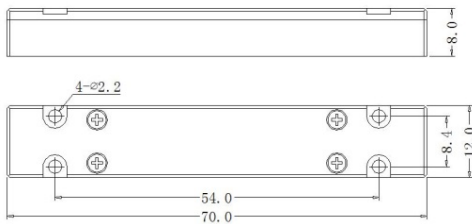
This N×1 multi-mode fiber combiner is designed for high power fiber laser application. It combines N pump lasers into one double cladding output fiber. Fiber type can be customized.

Key Features

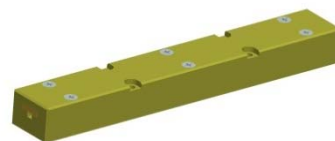
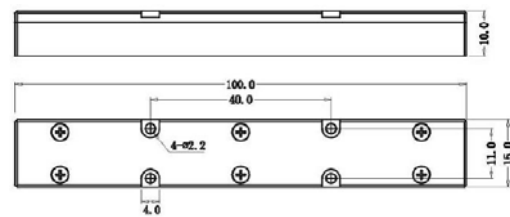
- High Pump Efficiency
- Wavelength Insensitive
- Custom Configurations Available

Mechanical Dimension

C4: 70x12x8



C7: 100x15x10



Unit: mm

Specifications

Parameters/Test conditions		Min	Typ.	Max	Unit	Note
1	Pump Operating Wavelength	800		1000	nm	
2	Pump Fiber	Core Diameter		105	μm	Refer to fiber codes.
3		Cladding Diameter		125	μm	
4		Numerical Aperture	0.15		-	
		Configuration (Nx1)		Pump Efficiency (%)	Power Handling (W, each port)	
5	Output Fiber	x/125 DCF (x=6,10,...)	7x1	>93 (Typ. 95)	50	
		10/200 DCF	7x1	>95 (Typ. 97)	50	
		25/250 DCF	7x1	>95 (Typ. 97)	50	
		20/400 DCF	7x1	>95 (Typ. 97)	200	
		10/200 DCF	19x1	>93 (Typ. 95)	20	
		25/250 DCF	19x1	>93 (Typ. 95)	25	
		20/400 DCF	19x1	>93 (Typ. 95)	80	
6	Fiber Length	0.8			m	Each port
7	Operating Environment Temperature	-5		+70	°C	
8	Operating Humidity	5		95	%RH	Not recommend in high humidity for long time.
9	Storage Temperature	-40		+85	°C	
10	Package	C4, C7			-	Handling power is different with PKG

Ordering Information

MPC-N×1- Pump wavelength/Pump power- Pump fiber -Output fiber-Package-Fiber length

Note :

N: Pump port number.

Pump/Output fiber: refer to fiber codes.

Package: C4, C7

C4: total power < 150W, C7: total power >= 150W