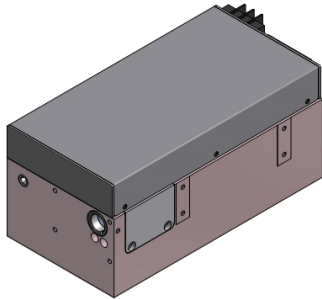


# Onda 355nm - Preliminary

Spec. #: ND18C01

## High Peak Power Diode Pumped Solid State Laser



### FEATURES

- \_ Up to 60 uJ
- \_ Short pulse duration
- \_ Active Q-Switched up to 100 kHz
- \_ All in one design
- \_ Air Cooled

Technical Specifications	Typical	
Output Wavelength	355	nm
Average Power	> 3 @ 50 kHz > 2 @ 80 kHz	W
Pulse Width	7 to 15	ns
Repetition Rate	50 to 100	kHz
Pulse to Pulse Energy Stability (RMS)	< 3%	
Polarization	Linear 100:1	
Beam diameter (1/e <sup>2</sup> )	< 1	mm
Beam Quality (M <sup>2</sup> )	< 1.5 @ 80 kHz	
Electrical Requirements	24 V DC IN – 300 W	
Cooling	Air Cooled	
Preliminary Mechanical Dimensions	305 x 105 x 95	mm <sup>3</sup>
Weight	< 6	kg

Options Available:	Applications:
<ul style="list-style-type: none"> <li>- Low jitter option</li> <li>- Water cooling</li> </ul>	<ul style="list-style-type: none"> <li>- Material processing</li> <li>- Special marking</li> </ul>



All information included in this document is subject to change without notice.

Update data sheets can be provided after formal request.

For complete details, please contact your local **Bright Solutions** sales representative or visit our website at [www.brightsolutions.it](http://www.brightsolutions.it)

**Bright Solutions Srl**  
Via Artigiani, 27  
27010 Cura Carpignano - PV  
Italy  
**Ph.** +39 0382583094  
**e-mail:** [sales@brightsolutions.it](mailto:sales@brightsolutions.it)